

STEFFES

Timed Online

CONSTRUCTION AUCTION

Upper Midwest Locations

Preview & Loadout
By Appointment



Built on Trust.

OPENS: Thursday, July 30

CLOSES: THURSDAY, AUGUST 6 | 3PM

WHEEL LOADERS

2017 Caterpillar 926M, CAH, ride control, rear view camera, bucket, 2,714 hrs., S/NCAT0926MALTE3757
2007 Caterpillar 988H, CAH, ride control, joystick steering, spade nose bucket, 35/65R33 tires, 16,233 hrs., S/NCBXY02057
2012 Hyundai HL780-9, CAH, ride control, bucket, 7,891 hrs., S/NHHKHL701HC0000192
1971 Fiat Allis 745, new meter at 2457, has fuel issue, may be fuel pump, good tires, S/N96M02414

TELEHANDLER

Gehl RS5-19 telehandler, 4WD, 48" pallet forks, 12-16.5 bar lug tires, 2,500 hrs., S/NRS519DY0SS0237

DOZERS

2012 Caterpillar D6N, CAH, 6-way blade, diff steer
1972 Caterpillar D5, open ROPS, 3306 Cat, 4-way 8' blade, front pull hook, rear hitch, 30" tracks, unknown hrs., (2) bad injector seals w/New seals included

EXCAVATORS & ATTACHMENTS

2002 Deere 160LC excavator, CAH, variable aux. hyd., 40" bucket w/frost teeth, hyd. thumb, 28" tracks, 5,863 hrs., sprockets, rails, & rollers, undercarriage done in December 2016 with approx. 200 hrs., S/NP00160X041907
2005 Volvo EC330LC hyd. excavator, CAH, aux. hyd., bucket teeth, 8,663 hrs., many upgrades, service records available, has bad pump regulator
John Deere 190E hyd. excavator, cab, 5' stick, 24" bucket, push blade, offset boom, mechanical thumb, approx. 8,000 hrs.
Bobcat 18" bucket w/frost teeth, quick tach, for mini excavator
CP 12" bucket w/frost teeth, pin-on, for mini excavator

MOTOR GRADER

2005 Caterpillar 14H, CAH, 16' moldboard

TRENCHING & BORING EQUIPMENT

1997 Case 460 trencher, Deutz diesel, 4x4, 4-wheel steer, hydrostatic, 6-way backfill blade, drives but front differential is out, S/NJAF0198393
Ditch Witch VPL-2 cable plow, needs work, S/N161490

AERIAL LIFTS

Genie TMZ50 towable man lift, 50' max platform height, 24v w/onboard charger, auto-leveling outriggers, single axle trailer, 2-5/16" ball hitch
JLG 20MVL manlift
1994 MEC 2548HT scissor lift, 24'9" lift, 2WD, 1,000 lbs. max weight cap., hrs. unknown, New controller, S/N710916

OTHER CONSTRUCTION EQUIPMENT

2006 Bomag BMP851, 1704 KG, Hatz diesel, S/N101720051162

2000 Kershaw Klearway 800 mulcher, cab, Fecon 8' mulching head, front screen, John Deere 6068T engine, hydrostatic front/back, single side entry, 28L-26 tires, approx. 3,000 hrs.

Ray-Go Gator Pulverizer, 8V71 Detroit, 8' drum, S/N08A0113-8-16

ACS JR416 root rake, 105" wide, 13" space, heavy duty hyd. grapple, (2) hyd. cyl., flat-face couplers, quick tach, fits John Deere 544 loader, S/N67257

CAT loader forks, 46"x15", 36" center to center mounts

Esco Super V bucket teeth: (5) Tiger teeth, (2) standard teeth

Wacker Neuson ride-on concrete power trowel, electric start gas motor

Arrow board, LED lights, 12v battery, New computer board in 2012, runs 16 hrs. before needs charging

SEMI TRACTORS

2013 Caterpillar CT660 tri-axle, day cab, air up/down steerable pusher, CT13 engine, Eaton 18 spd., engine brake, air ride cab & susp., air slide 5th, cruise, power windows, locks, & mirrors, wet kit, power enhanced, 14,000 lb. fronts, 46,000 lb. rears, full locking rear end, 248" WB, aluminum fenders, New 11R24.5 front tires, 11R24.5 rear tires, aluminum wheels, 112,336 actual miles

2009 Peterbilt 387

1996 Kenworth T800 tandem axle, sleeper

VAC, JETTER, & WATER TRUCKS

2014 Western Star 49001 tri-drive hydrovac truck, Vactor 214XXPD vac unit

1995 Ford CF8000 cargo single axle jetter truck, 8.3 Cummins, Allison 6 spd. automatic, Aquatech SJ1500E sewer jetter, 1,500 gal. water tank, 6 cyl. diesel engine, hose & reel, 11,145 hrs., 11R22.5 tires, 186,870 miles
1970 Mack DM607S water truck, spring susp., 2,500 gal. tank, shows 6,968 miles

BOOM & BOX TRUCKS

2004 Chevrolet C5500 knuckle boom truck, Duramax diesel, automatic, diff lock, cruise, IMT 3.0/45 knuckle boom crane, hyd. outriggers, steel 14'x96" flatbed, HD rear hitch, brake controller, 245/70R19.5 rear duals, 208,203 miles

1969 GMC 6500 twin screw dump truck, 427 Big Block, rebuilt Holley 750 carb, 5&4 spd., Galion 13' steel box, hoist, end gate, air brakes, approx. 20,000 miles on rebuilt engine, rear ends have been gone through

1980 Ford 2 ton single axle, 4&2 spd., 14' box

SERVICE & OTHER PICKUPS

1999 Ford F450 service unit, 7.3L diesel, automatic, 11' service body, extra toolboxes, 225/70R9.5 tires

1995 Ford F350 Super Duty service unit, 460 gas, 5 spd. manual, 12' service body w/downriggers

w/Miller Bobcat 225G welder/generator, air compressor, Auto Crane 600H crane, 56,440 original miles

2012 Chevrolet 1500 Silverado LTZ, 4-door, ext. cab, 6-1/2' box, 4WD, 220,022 miles

2012 GMC 1500 Sierra SLE, 4-door, ext. cab, 6-1/2' box, 4WD, 292,965 miles

2011 Chevrolet 1500 Silverado, 2-door, reg. cab, 8' box, 146,997 miles

2011 Dodge RAM 1500 Quad cab, RAM 4.7 liter engine, automatic, 2WD, A/C, power windows & locks, leather, 123,916 miles, engine has noise

2004 Ford F450, reg. cab, V10 gas, automatic, compression on the #3 cyl. is 50 psi, A/C, 112,212 miles, have service records

VACUUM TRAILERS

2015 Dragon quad axle vacuum trailer, 193 barrel

(2) 2014 Dragon quad axle vacuum trailers, 185 barrel

(2) 2013 Dragon quad axle vacuum trailers, 185 barrel

2015 PLTM tri-axle vacuum trailer, 165 barrel

2012 Western Construction VT130 vacuum trailer

(7) 2012 CT Fabrication tri-axle vacuum trailers, 165 barrel

2012 Northern tri-axle vacuum trailer, 165 barrel

2012 RMWF tri-axle vacuum trailer, 165 barrel

2011 Dragon tri-axle vacuum trailer, 165 barrel

(2) 2010 Proco tri-axle vacuum trailers, 165 barrel

2012 Polar vacuum trailer, 12,000 gal.

2010 Dragon vacuum trailer, 11,000 gal.

TANKER TRAILERS

2014 Etnyre ACXR-DRT T7036 tanker trailer

(2) 2012 Tytal 250 tanker trailers, one is aluminum

END & BELLY DUMP TRAILERS

1986 Dorsey quad axle end dump, 28'x64" sides, steel frame, spring ride, front 2-axle lift, 11R22.5 tires

1984 Load King tri-axle belly dump trailer, 40', spring ride, 18 cu. yd., 11R22.5 tires

1979 Cook Bros tandem axle belly dump trailer, 40', spring ride, 11R22.5 tires on steel rims

1982 Mark L tandem axle utility trailer

1967 Miller tandem axle pintle hitch trailer, 8'x22', tilt bed, 8.25R15 dual tires, 5-ply steel, 20,000 lb. rating

(2) 4-wheel trailers, 8'x13.8'

(2) 4-wheel trailers, 8'x13.8'

(2) 4-wheel trailers, 8'x13.8'

(2) 4-wheel trailers, 8'x13.8'

(2) 4-wheel trailers, 8'x13.8'

(2) 4-wheel trailers, 8'x13.8'

(2) 4-wheel trailers, 8'x13.8'

(2) 4-wheel trailers, 8'x13.8'

(2) 4-wheel trailers, 8'x13.8'

(2) 4-wheel trailers, 8'x13.8'

(2) 4-wheel trailers, 8'x13.8'

(2) 4-wheel trailers, 8'x13.8'

(2) 4-wheel trailers, 8'x13.8'

(2) 4-wheel trailers, 8'x13.8'

(2) 4-wheel trailers, 8'x13.8'

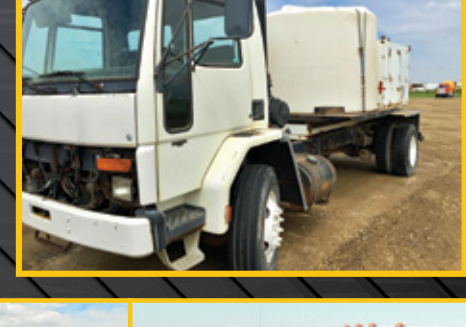
(2) 4-wheel trailers, 8'x13.8'

(2) 4-wheel trailers, 8'x13.8'

(2) 4-wheel trailers, 8'x13.8'

(2) 4-wheel trailers, 8'x13.8'

(2) 4-wheel trailers, 8'x13.8'



701.237.9173 | SteffesGroup.com

Steffes Group, Inc., 2000 Main Avenue East, West Fargo, ND 58078

TERMS: All items sold as is where is. Payment of cash or check must be made sale day before removal of items. Statements made auction day take precedence over all advertising. \$35 documentation fee applies to all titled vehicles.

Titles will be mailed. Canadian buyers need a bank letter of credit to facilitate border transfer. Scott Steffes ND81, MN14-51; Brad Olstad ND319, MN14-70; Max Steffes ND999, MN14-031; Justin Ruth ND2019, MN14-041;

Ashley Huhn ND843, MN47-002; Eric Gabrielson ND890, MN47-006; Randy Kath ND894, MN47-007; Shelly Weinzettl ND963, MN86-79; Scott Gillespie ND1070, MN14-30